

Support Center

[Home](#) > [LIQUID NOTES](#) > I get an error message "C...

I get an error message "Could not open file - No chords detected in MIDI file" when opening a project.

Last Updated: Jan 15, 2015 07:15PM CET

This article talks about an error message "Could not open file - No chords detected in MIDI file" that will show up when you load a MIDI file into Liquid Notes that doesn't contain note structures that outline chords.

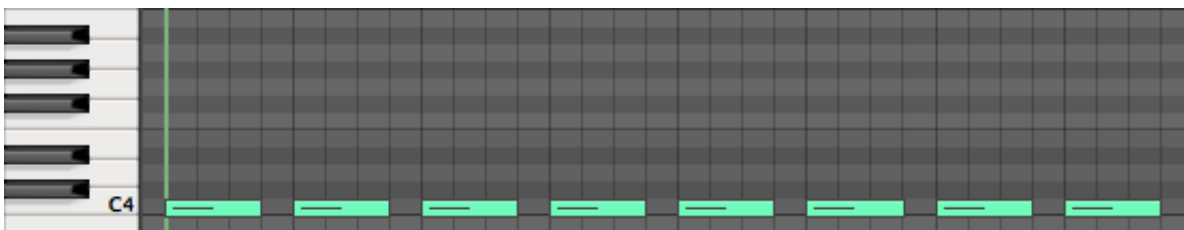
Quick Answer: For optimal results, add a distinct chord, melody and bass track to your music project. At the very least, you should have one track in your project, containing at least two overlapping notes on different pitches that outline a harmonic structure which then can be analyzed by Liquid Notes.

No chords detected in MIDI file

Liquid Notes is based on a deep harmonic analysis that is able to read and interpret your MIDI arrangement like an expert composer does. Whenever you open a project, a track type classification will determine the different instruments and their role in the song, whereas the harmonic analysis will identify all correlations of notes between each other, define chord boundaries, etc. over your entire song.

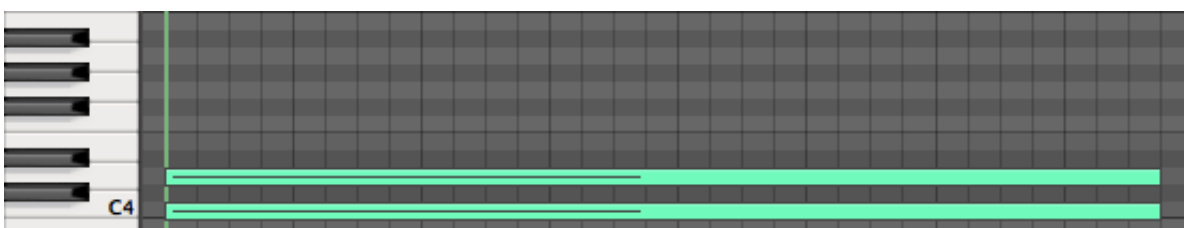
The "No chords detected"-error arises when chord-like note structures - which are necessary to perform such a deep harmonic analysis - are missing in the file you want to load. An example would be a MIDI file containing only one track, which consists only of notes of the same pitch.

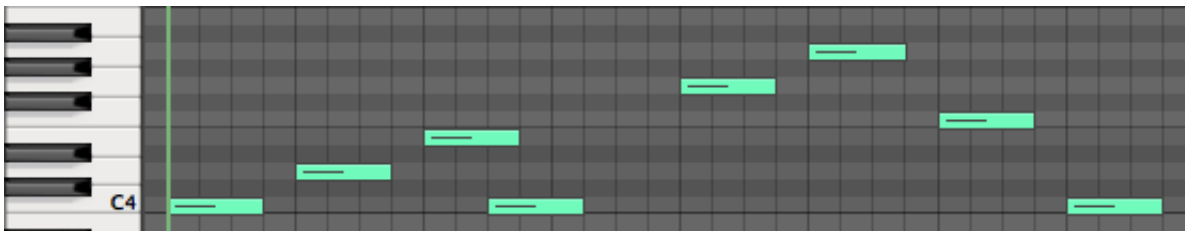
This is too little information to extract any harmonic structure from:



At the very least, Liquid Notes needs a track consisting of notes of varying pitch. These can be used to derive an underlying scale, which in turn can be used to establish the harmonies of the piece.

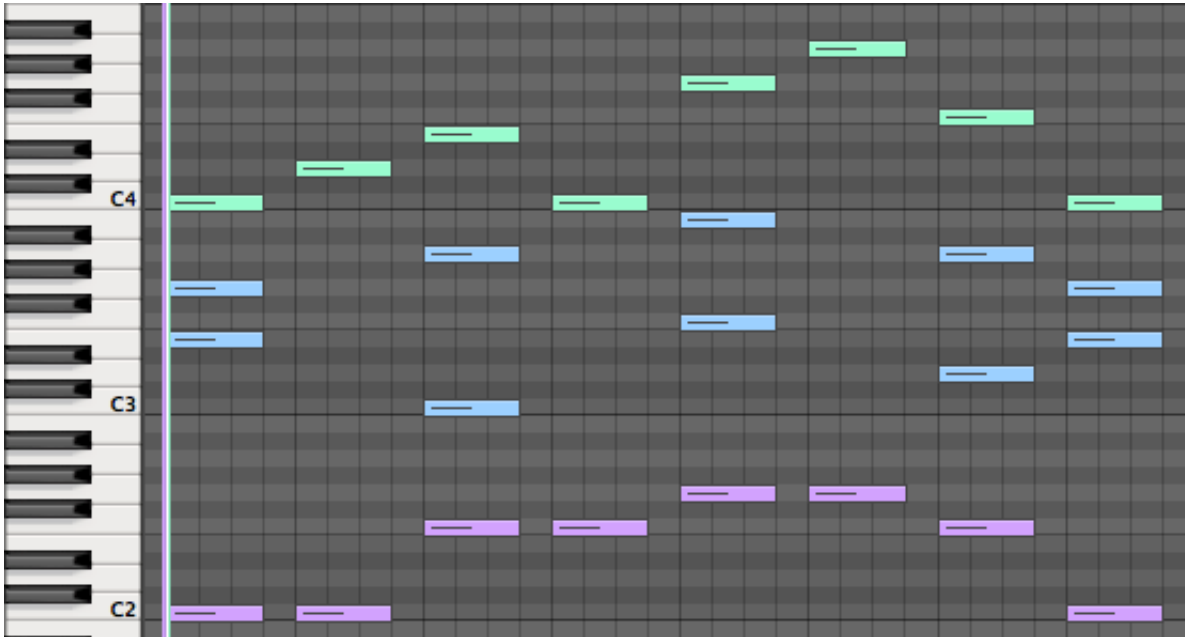
Here are two such examples that work well with Liquid Notes' harmonic analysis:





These would already load without errors in Liquid Notes. But the results you will get with these very simple tracks would be definitely not optimal.

Liquid Notes can perform best when you include a separate melody, chord, and bass track in your project, like in the following example:



In the above sample, there are three tracks in the sequencer. Each one is differently colored, and they are shown all together in the piano roll view you can see in the picture. The green track functions as melody, the blue one as chords, and the purple one as bass.

Liquid Notes can correctly classify cleanly separated tracks like this, and also gives the most accurate results this way.

Related articles:

[No chord track found in the arrangement](#)

[The track\(s\) .. of the composition seem\(s\) to be ..](#)

[Optimal preparation of an arrangement for Liquid Notes](#)

Need Help?

Should you require assistance, get in touch with us at support@re-compose.com!

I found this article helpful

I did not find this article helpful